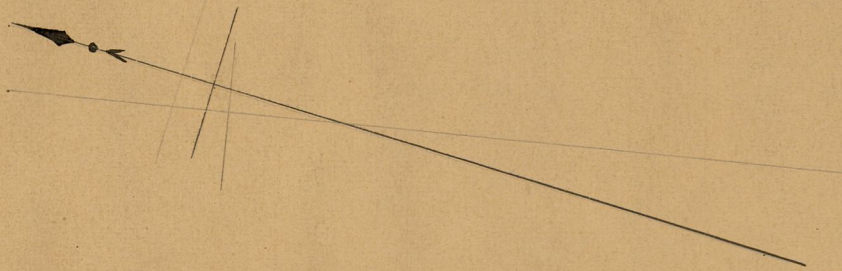


Providence R.I.
This plat accompanies
our report of this date.

PROVIDENCE, R. I.
CITY ENGINEER'S OFFICE
STREET LINE DEPT.
Mar. 18 1886.
011718

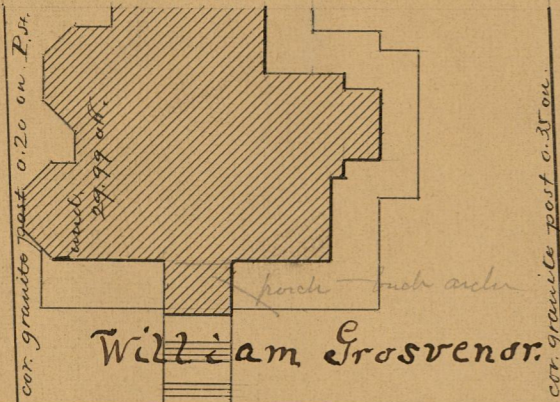
PLAT OF
PROSPECT STREET

FROM OLNEY ST. TO GEORGE ST.
IN SEVEN SHEETS
SCALE 40 FEET PER INCH.



cor. granite coping 0.16 of P.S.

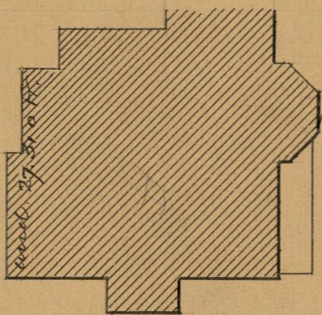
OLIVE ST.



William Grosvenor.

STREET

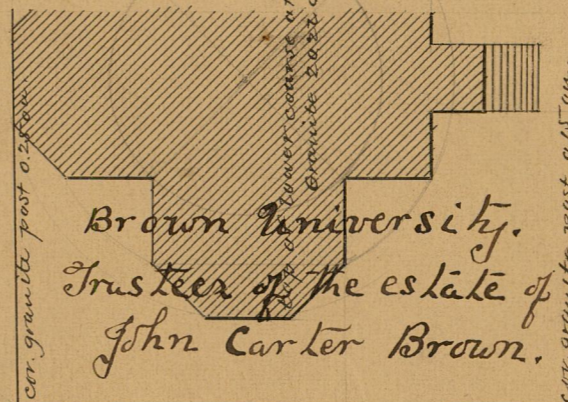
cor. granite post 0.09 on.



George H. Corliss.

cor. granite post 0.22 on.

ALLEY



Brown University.
Trustee of the estate of
John Carter Brown.

cor. granite post 0.15 on.

STREET

cor. granite post 0.21 of.

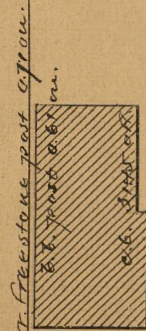
Brown
University

FG = 1021.48

PROSPECT STREET

50.15

50.15

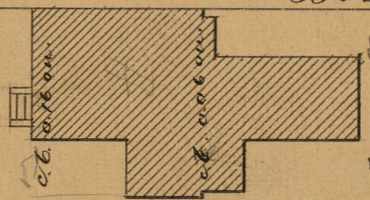


William Grosvenor.

cor. post 0.08 on P.S.

ANGELL

cor. post 0.08 on P.S.

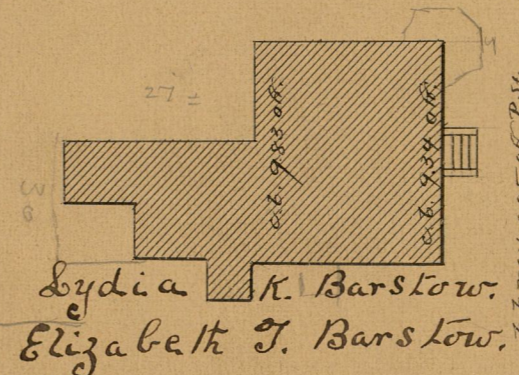


Lyra F. Nickerson,
wife of Edward J.

cor. post 0.05 on P.S.

FANES
PROSPECT

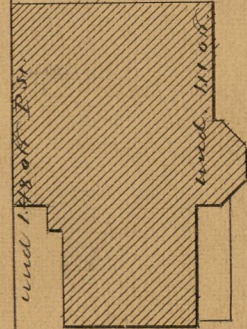
cor. granite post 0.03 on P.S.



Lydia K. Barstow.
Elizabeth J. Barstow.

cor. granite post 0.05 of P.S.

WATERMAN



Amasa S.
Westcott, Trustee.

OFFICE No. 8788
DRAWER " 83
SHEET " A-6